

Shire of Dumbleyung Public Health Plan

2023 - 2033



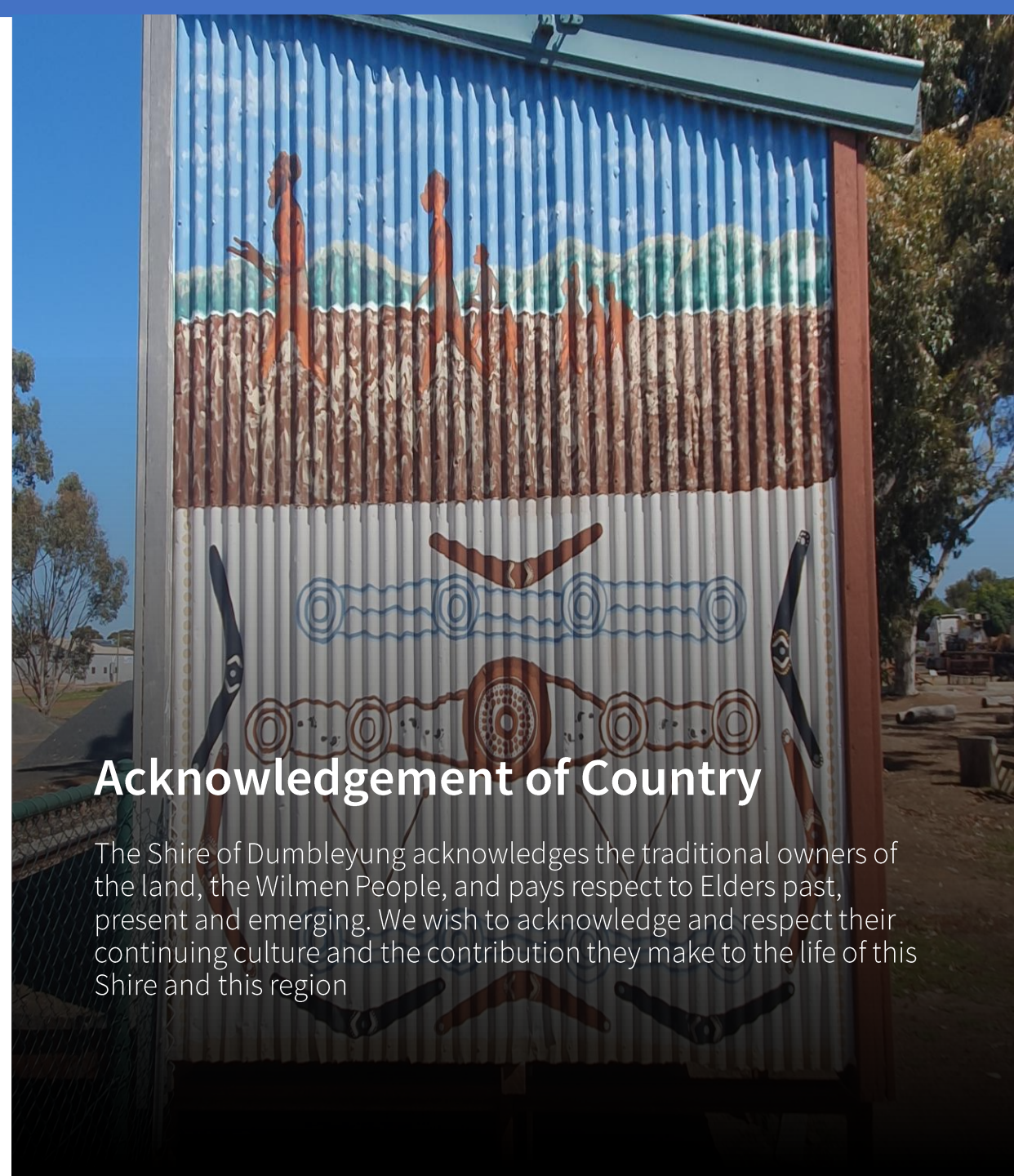
Title	Public Health Plan
Project	Shire of Dumbleyung Public Health Plan
Status	Final
Version	D
Date of Release	1 February 2024

Disclaimer

This document was prepared for the exclusive use of the Shire of Dumbleyung. Hatch (Hatch RobertsDay) acts in all professional matters as a faithful advisor to its clients and exercises all reasonable skill and care in the provision of its professional services. The information presented herein has been compiled from a number of sources using a variety of methods. Hatch RobertsDay does not attempt to verify the accuracy, validity or comprehensiveness of any information supplied to Hatch RobertsDay by third parties. Hatch RobertsDay makes no warranty, express or implied, or assumes any legal liability or responsibility for the accuracy, validity or comprehensiveness of this document, or the misapplication or misinterpretation by third parties of its contents. Reference herein to any specific commercial product, process, or service by trade name, trademark, manufacturer, or otherwise, does not necessarily constitute or imply its endorsement, recommendation, or favouring by Hatch RobertsDay. This document cannot be copied or reproduced in whole or part for any purpose without the prior written consent of Hatch RobertsDay.

© Hatch Pty Ltd, 2023

Cover image: Dumbleyung Bowls Club. Right image: Dumbleyung local artwork



Acknowledgement of Country

The Shire of Dumbleyung acknowledges the traditional owners of the land, the Wilmen People, and pays respect to Elders past, present and emerging. We wish to acknowledge and respect their continuing culture and the contribution they make to the life of this Shire and this region

Contents

Foreword	<u>4</u>
Executive Summary	<u>6</u>
Introduction	<u>7</u>
Our Vision	<u>8</u>
The Shire of Dumbleyung	<u>9</u>
Community Health Profile	<u>10</u>
Our Public Health Plan	<u>15</u>
Public Health Initiatives	<u>17</u>
Strategic Health Infrastructure and Services	<u>22</u>
Monitoring Progress and Reviewing Our Priorities	<u>31</u>

Dumbleyung Community Resource Centre



Foreword

The Shire of Dumbleyung recently established its new strategic direction via the adoption of its 2022-2032 Strategic Community Plan. Our Plan sets new aspirational benchmarks targeting key strategic projects and priorities that aim to transform the local economy.

Our Plan is underpinned by significant community engagement that sought to secure local input around important areas of focus moving forward. Feedback and key messages from our community were to increase population, attract new business, be a destination and deliver sound asset management.

Based on this feedback, a strong economic development and infrastructure focus is reflected in the Plan supporting key industry sectors.

SHIRE OF DUMBLEYUNG STRATEGIC COMMUNITY Plan on a Page ‘Transforming our Future by Delivering Jobs & Growth’ 2022-2032

The Shire of Dumbleyung Strategic Community Plan aspires to move Dumbleyung and its economy a quantum leap forward. The Plan is broken up into three main sections (Economic Development, Social Development & Economic Infrastructure) and eight industry areas.

ECONOMIC DEVELOPMENT ACTIVITIES

INDUSTRY AREA 1. AGRICULTURE

Dumbleyung ‘Smart Farming’ Development Plan

The aim is establish a fully integrated IT infrastructure and operating system that is able to collect data and information from right across the farming property that allows farmers to optimise the performance of the business enterprise by reducing input costs, tracking, herding & protecting livestock, managing water resource usage (including livestock feed points) and to enhance potential harvest quality & yield.

INDUSTRY AREA 2. AGRICULTURE & AQUACULTURE

Dumbleyung Alternative Water Access Study

Focus needs to be given to other forms of water provision to sustain communities without the reliance of trucking in intermittent supplies. An alternative water access study is recommended to identify a water supply solution that creates a more regular and constant supply outcome. This would be a regionally focused study to identify a solution that could be adopted and made assessable for all impacted farming communities, including specific Aquaculture businesses.

INDUSTRY AREA 3. SMALL BUSINESS

Small and Medium Enterprise (SME) Business Enhancement Plan

Government intervention is required to underwrite a program to increase the number of new 3x2 and 4x2 housing stock in both towns which would also accommodate teachers and police. The Shire could own and lease out these dwellings once developed, creating an additional revenue source for the Shire. Funds generated could be placed into reserve to finance ongoing maintenance, upkeep and potential renewal. Funds are required to establish serviced blocks in both towns and/or industrial shed infrastructure to further entice lower cost entry new business growth opportunities.

INDUSTRY AREA 4. TOURISM

Dumbleyung Lake Masterplan

There is an opportunity to explore complete whole of lake access to provide a total visitor experience, including the identification of a walking/bike riding link back into Dumbleyung townsite (Dumbleyung is located circa 10kms from the lake). This would create day and overnight trip opportunities for visitors looking for a range of experiences i.e. trails, flora/fauna interpretation, additional Donald Campbell inter, Aboriginal story-telling, all potentially using state of the art augmented and virtual reality mediums. Funding will be required to engage appropriately skilled parties (consultants) to develop a masterplan for this important site.

Dumbleyung & Kuerin Destination Development Plan

An overarching destination development plan needs to be established for both townsites that considers the broader strategic needs of both towns and focusing on transformational opportunities to attract and retain visitors. Ideally, both towns should establish at least one iconic world class attraction e.g. the Ultimate Donald Campbell 6D Theatre Experience in Dumbleyung and a major skate park and pump track for Kuerin (complementing the existing bouncy pillow, turning Kuerin into a significant youth precinct).

Dumbleyung Aboriginal Tourism Support Plan

A Dumbleyung Aboriginal Tourism Support Plan will engage with the existing business proprietors, key Aboriginal tourism organisations (WAITOC) and other key stakeholders to explore opportunities to add value to the existing offering, including opportunities to build broader direct connections and linkages between the international marketplace and Dumbleyung.

INDUSTRY AREA 5. HOSPITALITY

Dumbleyung Short Stay Accommodation Plan

The Shire is in a good position to identify suitable land holdings within the Dumbleyung township that offers sufficient size and location to establish a private or publicly owned lodging.

INDUSTRY AREA 6. MINING

Dumbleyung Mining Partnership Approach

An aim of positive engagement is to form a close relationship with the respective miner. This engagement could take the form of a more formalised approach at an appropriate time, such as a Memorandum of Understanding (MOU) type Relationship Agreement. Each agreement would seek a miner’s commitment to utilise local businesses and resources (including Dumbleyung Airport) during both project construction and operational phases.

SOCIAL DEVELOPMENT ACTIVITIES

INDUSTRY AREA 7. HEALTH

Dumbleyung Health Alliance

As Health forms a vital part of maintaining a strong and vibrant community, it is important that a relationship is established with the lead State Government agency responsible for this sector. WACHS should be engaged to explore the possibility of formalising an ongoing contact relationship with the Shire of Dumbleyung. This relationship could be formalised via a MOU that identifies areas of common interest between the parties such as housing access for hospital employees, night time RFDS operations (requires airport runway extension), expansion of GP services through electronic consults and securing an ongoing State Government commitment to keep the Dumbleyung Hospital open. A following joint Dumbleyung Health Development Plan could then be established that focuses on current & future needs, including key actions to fill gaps such as those mentioned.

INDUSTRY AREA 8. EDUCATION

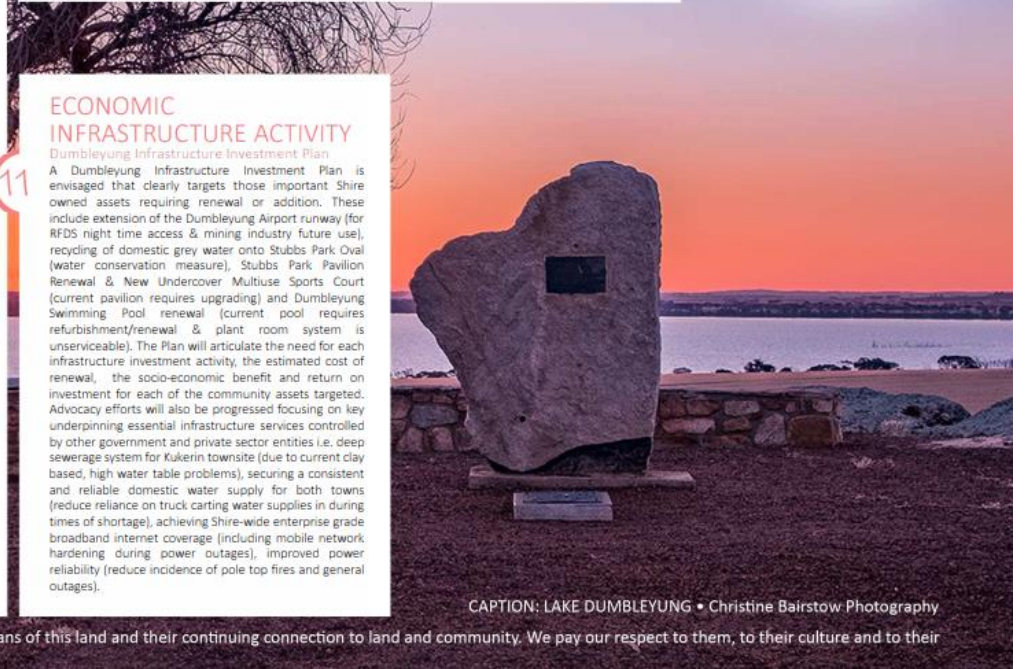
Dumbleyung & Kuerin Education Alliance

The Shire of Dumbleyung should endeavour to play a more proactive strategic role by establishing stronger relationships with both schools. An MOU could be developed between the parties that consolidates the relationship and identifies areas of importance (including existing gaps) that could be pursued to further strengthen the important role that schools play in the community.

ECONOMIC INFRASTRUCTURE ACTIVITY

Dumbleyung Infrastructure Investment Plan

A Dumbleyung Infrastructure Investment Plan is envisaged that clearly targets those important Shire owned assets requiring renewal or addition. These include extension of the Dumbleyung Airport runway (for RFDS night time access & mining industry future use), recycling of domestic grey water onto Stubbs Park Oval (water conservation measure), Stubbs Park Pavilion Renewal & New Undercover Multiuse Sports Court (current pavilion requires upgrading) and Dumbleyung Swimming Pool renewal (current pool requires refurbishment/renewal & plant room system is unserviceable). The Plan will articulate the need for each infrastructure investment activity, the estimated cost of renewal, the socio-economic benefit and return on investment for each of the community assets targeted. Advocacy efforts will also be progressed focusing on key underpinning essential infrastructure services controlled by other government and private sector entities i.e. deep sewerage system for Kuerin townsite (due to current clay based, high water table problems), securing a consistent and reliable domestic water supply for both towns (reduce reliance on truck carting water supplies in during times of shortage), achieving Shire-wide enterprise grade broadband internet coverage (including mobile network hardening during power outages), improved power reliability (reduce incidence of pole top fires and general outages).



CAPTION: LAKE DUMBLEYUNG • Christine Bairstow Photography

‘The Shire of Dumbleyung acknowledges the Noongar people as traditional custodians of this land and their continuing connection to land and community. We pay our respect to them, to their culture and to their Elders past and present.’

Although economic development is a principle focus within the Plan, key areas of social development are also included. These areas include Health and Education. Whilst employment underwrites the economic health and prosperity of regional areas, this must be supported by equally strong health and education sectors. Employment will bring a person into a community, but without quality education and high standard health care, the family of that worker will not necessarily follow (negating potential population growth opportunities).

This Shire of Dumbleyung Public Health Plan has twin objectives, one to meet new legislative requirements for Local Government Authorities to establish locally owned and adopted Public Health Plans, and secondly to identify key strategic areas requiring support by higher levels of government to ensure that Dumbleyung's public health system remains an ongoing valued service to meet the needs of a growing community into the future (aligning with the Shire's Strategic Community Plan).

The Shire of Dumbleyung commends this Public Health Plan and looks forward to partnering with key Federal and State Government agencies to support its implementation.

Shire President, Cr Amy Knight



Executive Summary

Around 7 million people – or 29% of the Australian population – live in regional and rural areas, which encompass many diverse locations and communities. These communities face unique challenges due to their geographic location and often have lower life expectancy and poorer health outcomes than people living in metropolitan areas including higher rates of hospitalisations, deaths, injury and have poorer access to, and use of, primary health care services, than people living in Major cities. Lifestyle and disadvantage related to education and employment opportunities also contribute to differing health outcomes.

Non-urban communities are often key contributors to national economic growth however, research suggests that higher burdens of disease in rural Australia represent a lost of \$27.5 billion in economic contribution. Despite this, across Australia in 2020/21, there was an estimated health-spend shortfall between urban and rural citizens of \$6.55 billion, or \$848.02 per capita, per year. Australians living outside major cities are three times more likely to rate access to general, specialist and mental health services as poor and they utilise Medicare up to 40% less than those in major cities.

Public health and health services and infrastructure are an integral part of that system and are critical for sustainable communities. Health services are provided not only by

infrastructure such as hospitals, but by health professionals. As stated by the Commonwealth Department of Health, “*Better access to healthcare services leads to better health outcomes. Better access comes when the health workforce is distributed according to community need*”. The social and economic challenges facing outer regional towns like Dumbleyung and Kukerin require a whole of system approach.

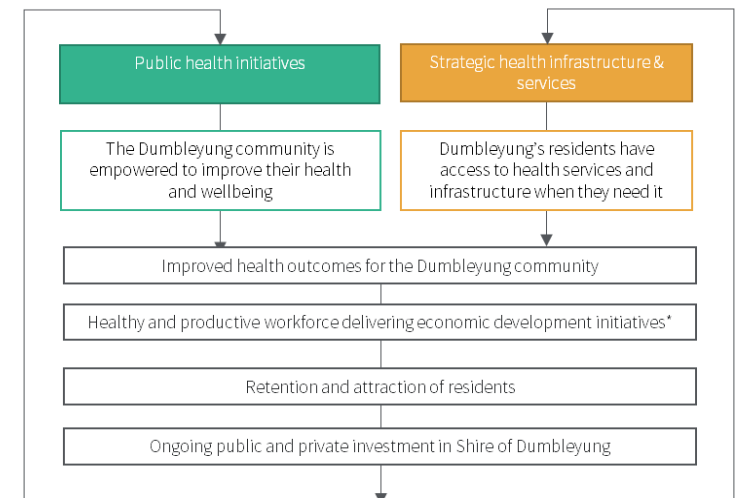
Supporting our ageing population

Since 2011 our population has grown very slowly from 605 people in 2011 to 681, our median age has increased by 4 years and there are 42 more people over the age of 65. The number of young people (25 and under) has increased by 22. Despite the moderate increase in the population, the number of families in Dumbleyung has decreased. Today, there is a higher proportion of people living with three or more long term health conditions in the Dumbleyung Shire, compared to the Wheatbelt Region and Western Australian population.

The trends in Dumbleyung’s population profile indicate that aged care will be an increasingly important service in the community, as more people enter the age where they will require increasing support. In addition, if the Shire is to retain its growing pool of young people, there will need to be engaging employment opportunities.

Our approach: Health is key to a sustainable community

The Shire of Dumbleyung’s (the Shire) Public Health Plan (the Plan) sets out the Shire’s priority actions and projects to support public health outcomes for residents. Alongside the promotion of public health initiatives and key messages to enable a healthy and sustainable community, the Shire will advocate for investment in strategic health infrastructure and services. This approach aims not only to help retain residents, but also to attract more people to live in the Shire of Dumbleyung



Introduction

The Shire of Dumbleyung's (the Shire) Public Health Plan (the Plan) sets out the Shire's priority actions and projects to support public health outcomes for residents.

The Plan draws from existing research and consultation completed with the community through the 2021 strategic planning process. The plan reflects the priorities identified by residents, the community's health and socio-economic profile, and the levers and resources the Shire will utilise to deliver the strongest impact for the community.

Alongside the promotion of public health initiatives and key messages to enable a healthy and sustainable community, the Shire will advocate for investment in strategic health infrastructure and services.

This approach aims not only to help retain residents, but also to attract more people to live in the Shire of Dumbleyung, thereby increasing investment in the local economy through salaries and new enterprises, and the ongoing delivery of improved population services.

Our approach also directly supports the WA Country Health Service strategic priority of '*...supporting country people to be as healthy as they can be and continue to play a part in the economic and social viability of country communities*' (WACHS Strategic Plan 2019-2024).



Dumbleyung Aged Care Residences

Our vision: “Transforming our future by delivering jobs and growth”

The Shire of Dumbleyung is a proud and progressive community that is ready to transform its local economy. Our community has a clear vision for the future, where Dumbleyung is a vibrant tourism destination, produces world class agriculture and aquaculture products, has a broader and much more diversified economy and is home to a thriving and growing population that is supported by diverse businesses and high-quality facilities and services.

After a period of steady decline, the Shire’s two towns of Dumbleyung & Kukerin have experienced a moderate increase in their population base and associated business and employment opportunities.

While this is a positive change, the population is still drawing from a low base, and the town remains vulnerable to a reduction in social amenities including education, health and general living standards.

This is an experience shared by many towns across regional Western Australia. It was in this context that the Shire developed its latest Strategic Community Plan (2022-2032), which involved in

depth consultation with the local community to identify priority projects, services and infrastructure that will underpin the ongoing growth and sustainability of the towns.

Dumbleyung is relatively well supported in Health provision with a functional Hospital (Dumbleyung Memorial), Kukerin Health Centre, an active St John’s Ambulance, modern aged care accommodation units (located adjacent to the hospital), semi-regular GP visits and permanent aged care beds (run from the hospital), and an operational airport for RFDS emergency services.

In order to transform the economy through jobs and growth, there is a need to invest further, or ensure the ongoing provision of these services and infrastructure. This will help ensure that the Shire’s economic growth potential can be realised, the required talent and enterprises can be attracted, and the Shire’s population can be retained.

The Shire’s Public Health Plan aligns with the Strategic Community Plan’s priority areas, which are implemented through the Corporate Business Plan.



The Shire of Dumbleyung

Located in the Wheatbelt region, Dumbleyung's name is of Noongar origin, coming from "Dambeling" which possibly means large lake or inland sea (although another source suggests it came from "dumbung", a game played with bent sticks and a hard piece of fruit). Lake Dumbleyung has been a significant meeting and cultural place of importance to the Noongar people for generations.

The lake nearby was then discovered by European explorers in 1843, and soon after, pastoralists and sandalwood cutters moved into the area, initially settling at Nippering, north of Lake Dumbleyung and 10 kilometres west of the present town.

Today, Dumbleyung's economy is predominantly reliant on agriculture, supported by aquaculture (yabbies), tourism and service and businesses that support our thriving and inclusive community. Our lake, the largest in southwestern Australia, is currently protected by the Dumbleyung Nature Reserve, and is an important drought refuge for waterbirds and a moulting area for the Australian Shelduck. Increased salination has made the lake's water unusable for agriculture, but it continues to be enjoyed by the community and visitors for recreation and sightseeing.



Dumbleyung Lake

Community Health Profile



Trends: A growing and ageing community

The Shire of Dumbleyung's population is increasing slowly, from 605 people in 2011 to 681 in 2021.

The population is ageing with the median age of the population increasing by 4 years since 2011. In addition, there are 42 more people over the age of 65, and this group makes up a larger proportion of the population. There are 22 more young people in Dumbleyung in 2021 compared with 2011.

Despite the moderate increase in the population, the number of families in Dumbleyung has decreased according to the 2021 Census, while the size of families has remained relatively stable.

Aboriginal and Torres Strait Islander People make up a larger percentage (+ 2 per cent) of the population in 2021 compared to 2011.

Median household incomes are increasing, as well as weekly rental costs. Mortgage payments have decreased. The changes in mortgage and rental payments are influenced by factor such as interest rates, loan repayments and the rental market.

The trends in Dumbleyung's population profile indicate that aged care will be an increasingly important service in the community, as more people enter the age where they will require increasing support. In addition, if the Shire is to retain its growing pool of young people, there will need to be engaging employment opportunities.

Indicator	2011	2016	2021	Trend
Total population	605 people	671 people	681 people	Increased
Males	54% of the population	52% of population	52% of population	Decreased
Females	46% of the population	48% of population	48% of population	Increased
People over the age of 65	92 people (15% of population)	115 people (17% of population)	140 people (21% of population)	Increasing in number and % of population
People under the age of 25	159 people (26% of population)	164 people (24% of population)	181 people (27% of population)	Increasing in number and slight increase % of population
Indigenous Australians	2% of population	3% of population	4% of population	Increasing as percentage of population
Median age	40 years old	42 years old	44 years old	Getting older
Number of families	171 families	177 families	161 families	Decreasing
Average number of children per family	1.9 children per family	1.7 children per family	1.9 children per family	Relatively stable
Median weekly household income	\$810 per week	\$1,088 per week	\$1,260 per week	Increased
Median monthly mortgage payments	\$813 per month	\$585 per month	\$515 per month	Decreased
Median weekly rent	\$80 per week	\$98 per week	\$150 per week	Increased

Source: ABS Quick Stats, 2011, 2016 & 2021 & ABS Community Profiles (2011, 2016, 2021)

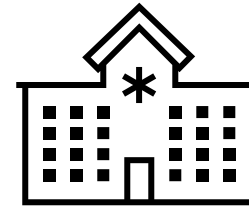
Regional health realities

Dumbleyung’s community, as well as the broader district, is serviced by the Dumbleyung Memorial Hospital, which contains 4 aged care residential beds, 1 emergency bay and community and child health services.

In the 2021 Census, Dumbleyung’s residents reported higher percentages of people living with three or more long term health conditions, compared to the Wheatbelt Region and Western Australian population.

As people age, their ability to travel to Perth or other regional centres to access health services may decrease, making it more important that services are accessible locally.

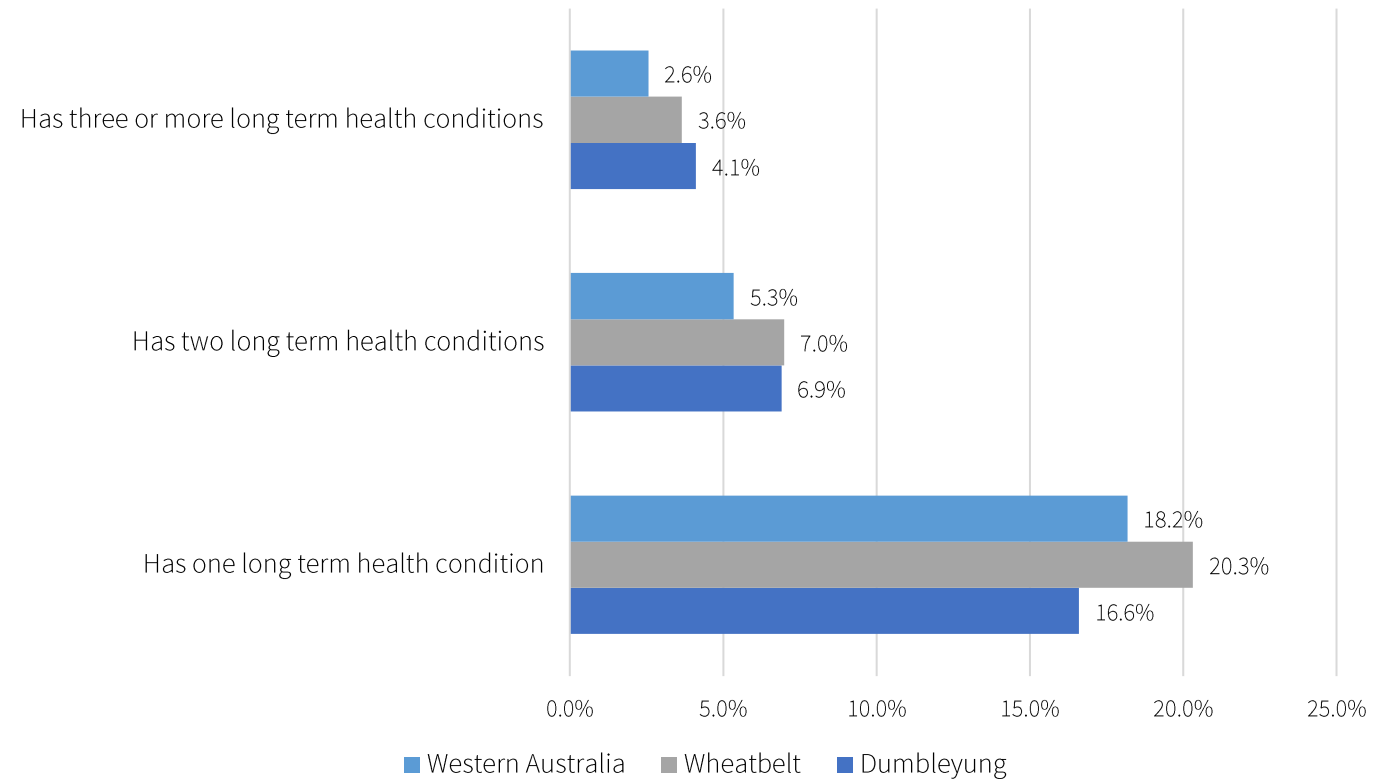
This higher proportion of complex health factors in individuals, coupled with an increase in the number and percentage of people over the age of 65, indicates that local access to stable and quality health care, and aged care, will be critical moving forward.



Dumbleyung Memorial Hospital

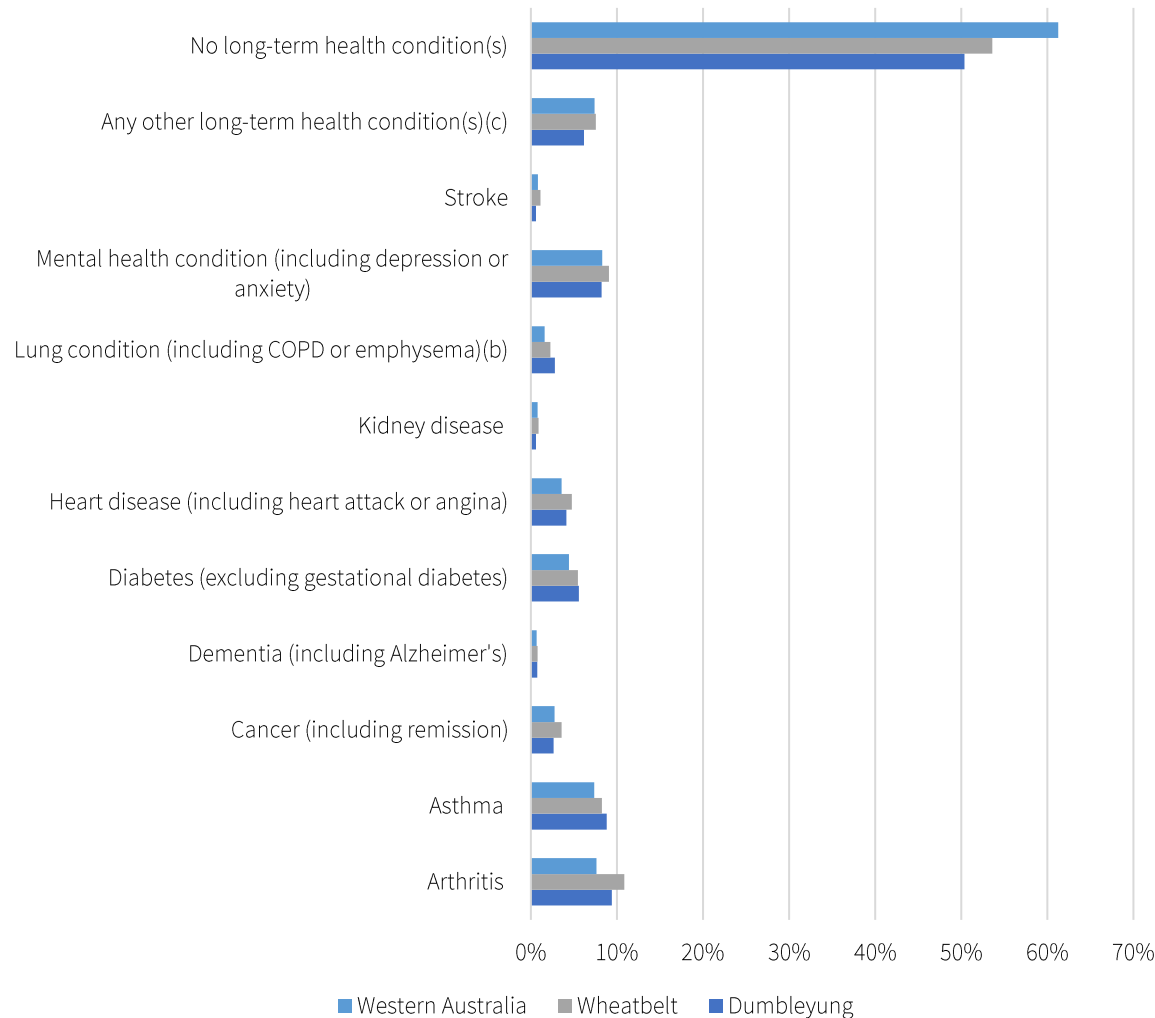
- 4 aged care residential beds
- 1 emergency bay
- Community and child health services

% of the population reporting a health condition, 2021

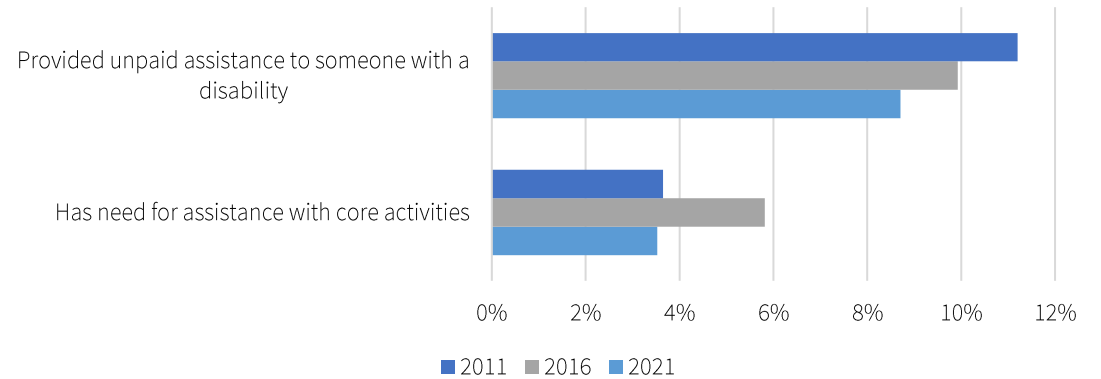


Regional health realities

Reported health conditions, as % of population, 2021



% of Dumbleyung population providing or requiring assistance with core activities, 2021



In 2021, a smaller proportion of Dumbleyung’s population reported having no long-term health conditions, when compared with the Wheatbelt Region and Western Australian average.

There was a higher percentage of the Dumbleyung population living with a **lung condition, diabetes or asthma**, compared to the Wheatbelt region and Western Australian Average.

Dumbleyung’s population also had comparable or higher levels of **arthritis, dementia, heart disease and mental health conditions** compared to the Western Australian average.

The percentage of the population that requires assistance with core activities has fluctuated between 2011 and 2021, and the percentage of the population who provide unpaid care has decreased slightly.

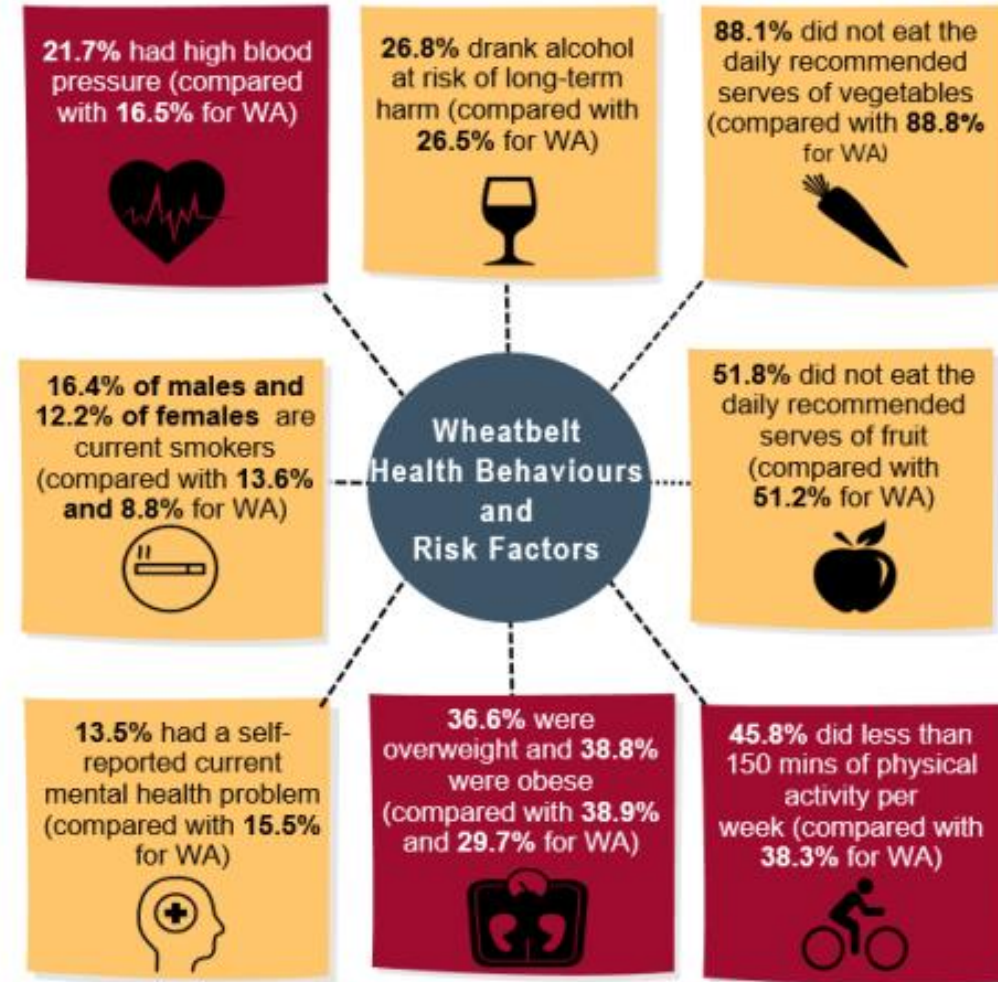
To help manage population health, particularly as the population ages, Dumbleyung residents will need consistent access to local quality health care, as well as support to live healthy lifestyles that can help to minimise the severity of their conditions.

Regional health realities

The Wheatbelt region has a high burden of chronic health conditions and vulnerable lifestyle risks in the population.

There are several risk factors that are linked to the reported health outcomes, including high prevalences of high blood pressure, low consumption of fruit and vegetables, and a high prevalence of smoking and obesity.

Public health initiatives have a strong role to play in encouraging and enabling healthier lifestyles and health choices.



Source: Wheatbelt Health Profile 2022, WA Country Health Services. Data comes from self-reported measures collected through the WA Department of Health's Health and Wellbeing Surveillance System.

Our Public Health Plan



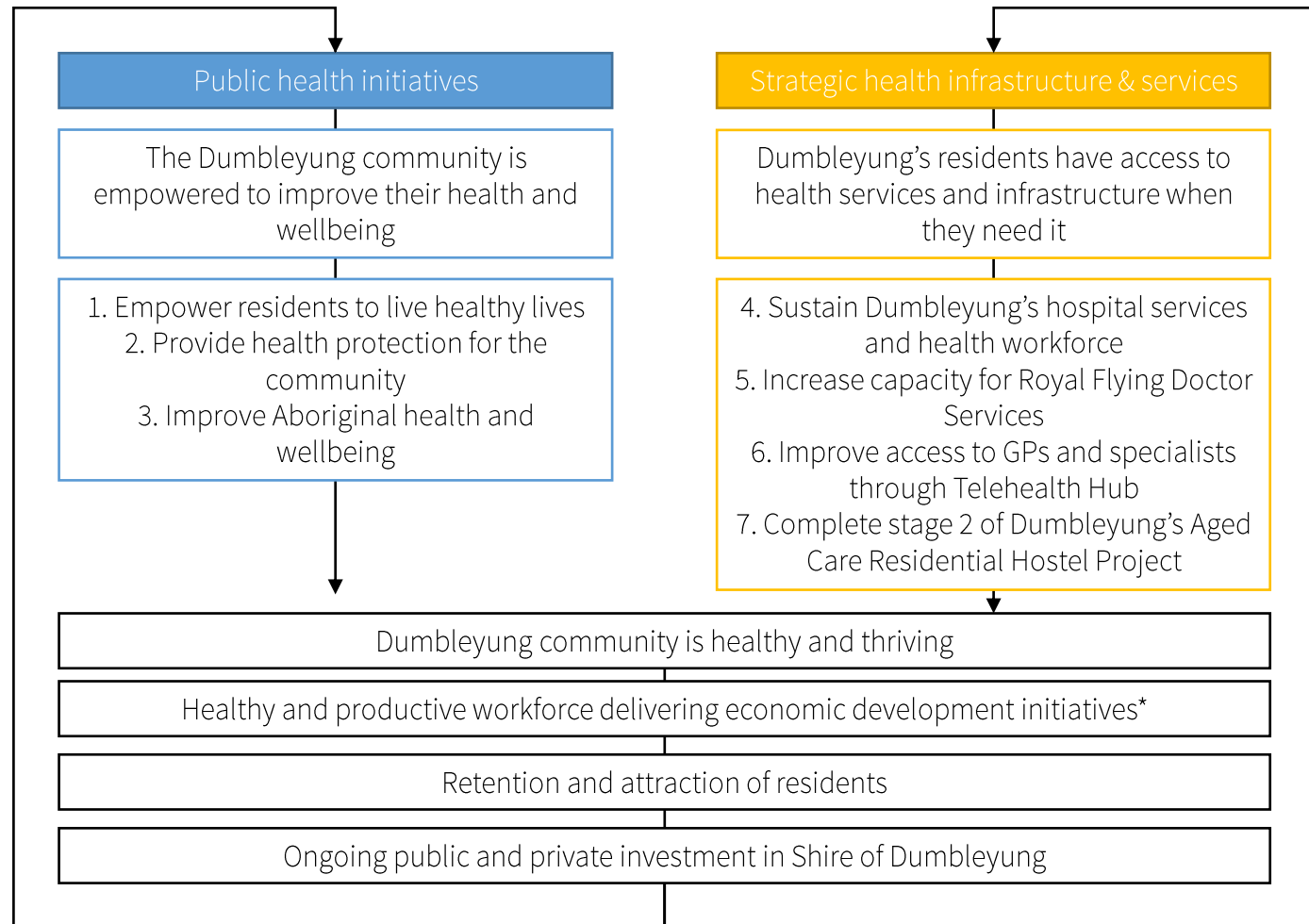
Public health initiatives will be supported by strong health infrastructure and services for a sustainable community

Alongside the promotion of public health initiatives and key messages to enable a healthy and sustainable community, the Shire will advocate for strategic health infrastructure investment to ensure sustainable services. The following diagram describes how these elements will work together to achieve positive health outcomes for Shire of Dumbleyung residents.

Advocating for strategic government investment in health infrastructure aims not only to help retain residents, but also to attract more people, including families, to live in the Shire of Dumbleyung. This leads to increased investment in the local economy through salaries and new enterprises, and the ongoing delivery of improved population services.

Our public health initiatives are aligned with the State Government's Public Health Plan and directly supports the following WA Country Health Service strategic priorities:

- Building healthy, thriving communities
- Caring for our patients
- Leaving innovation and technology
- Collaborating with our partners



*See the Shire's Economic Development Investment Prospectus

Public Health Initiatives



WA State Public Health Plan 2019-2024

“We want the people of WA to experience the best possible health, wellbeing and quality of life. It is important that Western Australians are supported to actively participate in community life and that the places and spaces where they live, learn, work and play are safe, clean, green and accessible.”

State Government Vision for a healthier WA.

The Western Australian Government has set out its public health priorities and objectives in the State Public Health Plan for Western Australia 2019-2024. The plan identifies that health outcomes for people living in regional Western Australia are poorer than for those living in metropolitan centres. The plan puts forward three priority areas, which the Shire’s Public Health Plan aligns with:

1. Empowering and enabling people to live healthy lives
2. Providing health protection for the community
3. Improving Aboriginal health and wellbeing

Three policy priorities that have been identified by the State Government within each of these objectives. To deliver public health initiatives with the Local Government’s resources, the Shire will collaborate with WA Country Health Services (WACHS) and local partners to empower and enable people to live healthy lives, provide health protection for the community and improve Aboriginal health and wellbeing.

The Shire will partner with WACHS to deliver more integrated services that improve patient outcomes, giving consumers more choice and control.

Current plans, policies and initiatives, as well as opportunities for further action for the Shire, are detailed on the following pages.

Objective	Policy priorities
Empowering and enabling people to live healthy lives	Healthy eating, physical activity, curbing the rise in overweight and obesity, reducing smoking and exposure to second-hand smoke, reducing harmful alcohol use, reducing illicit drug use and misuse of pharmaceuticals and other drugs of concern, optimising mental health and wellbeing, preventing injuries and promoting safer communities.
Providing health protection for the community	Reducing exposure to environmental health risks, administering public health legislation, mitigate the impact of public health emergencies on the community, supporting immunisation, preventing and controlling communicable diseases, promoting oral health improvement.
Improving Aboriginal health and wellbeing	Reducing chronic disease, injuries and improving mental health for Aboriginal people, reducing communicable diseases for Aboriginal people, improving living conditions for Aboriginal people in remote communities.

1. Empower and enable people to live healthy lives

Policy priorities	Priority for Dumbleyung*	Aligned SoD or WACHS Plans and Policies	Existing activities within the Shire	The Shire will:
A more active WA	High	No current policy or plan	The Shire provides support to local sporting and recreation clubs through the provision of ovals and sporting facilities, as well as promotes sporting events on the Shire's website.	Establish a Shire of Dumbleyung Footpath Renewal Strategy, including the identification of upgrade opportunities (grant funding dependent).
Preventing injuries and promoting safer communities	High	Disability Access and Inclusion Plan, 2019-2024	Injury Matters initiatives and resources	Establish a Shire of Dumbleyung Footpath Renewal Strategy, including the identification of upgrade opportunities (grant funding dependent).
Making smoking history	High	Shire of Dumbleyung Policy 4.1 - Smoking Ban - Shire Property and Vehicles	Under Shire of Dumbleyung Policy 11.2 - Hall Bookings and Hall Equipment Hire, smoking is prohibited in all Shire owned or controlled buildings and within 5 meters of all building entrances and openings.	Maintain strong support and adherence to current Shire policy position(s). Promote all Shire events as Smoke Free. Ensure appropriate signage at Shire facilities and playgrounds.
Healthy Eating	High	Shire of Dumbleyung Policy 11.2 - Hall Bookings & Hall Equipment Hire	No current activities	Share externally sourced and supplied healthy recipes in Shire newsletters or on social media.
Curbing the rise of overweight and obesity	High	WACHS Wheatbelt Healthy Weight Action Plan	Activities associated with Action Plan	Ensure WACHS produced information about healthy weight management is accessible via the Shire, CRC and other communication channels (newsletters, social media, noticeboards).
Optimising mental health and wellbeing	Medium	Disability Access and Inclusion Plan, 2019-2024 Regional Men's Health Initiative	Dumbleyung Mens Shed, Craft Group at CRC, Annual Events such as Australia Day, ANZAC Day. Celebration of local history through museums and Traditional Owner knowledge, history and stories. Holyoake Prevention Services. Regional Men's Health Initiative activities and services.	Support community activations, events and activities that create opportunities for connection and interaction, particularly across age groups and cultural groups.
Reducing harmful alcohol use	Low	Shire of Dumbleyung Policy 8.5 - Outside Staff After Payday Refreshments	Under Shire of Dumbleyung Policy 11.2 - Hall Bookings and Hall Equipment Hire, any proposed consumption of alcohol must comply with an approved Liquor License.	Share externally sourced information and resources from WACHS through Shire newsletters, social media and notice boards.
Reducing use of illicit drugs, misuse of pharmaceutical and other drugs of concern	Low	No current policy or plan	Holyoake Prevention Services.	Share externally sourced information and resources from WACHS through Shire newsletters, social media and notice boards.

* According to health data / indicators for the community

2. Provide health protection for the community

Policy priorities	Priority for Dumbleyung*	Aligned SoD or WACHS Plans and Policies	Existing activities within the Shire	The Shire will:
Reduce exposure to environmental health risks	High	Customer Service for Waste Water Charter, Dumbleyung Sewerage Scheme	Shire of Dumbleyung owns and operates an underground reticulated sewerage system under a formal Licence issued by the Economic Regulation Authority (ERA).	Undertake an Asset Condition Review and Assessment of the Dumbleyung Reticulated Sewer System. Advocate to the State Government for the installation of an underground sewerage system for Kukerin townsite.
Mitigate impact of public health emergencies	Medium	Shire of Dumbleyung Local Emergency Management Arrangements	Annual Shire of Dumbleyung Local Emergency Management Committee (LEMC) Desktop Emergency Management Exercise.	In partnership with key lead State Government agencies, provide support in emergency event situations through its Local Emergency Management Arrangements.
Support immunisation	Medium	WACHS Immunisation Program	WACHS related activities	Support WACHS or the authority responsible for promoting immunisation in the community through its communication channels.
Prevention and control of communicable diseases	Medium	No current policy or plan	No current activities	Support Department of Health, WACHS or the authority responsible for promoting knowledge and education about communicable diseases in the community through its communication channels.
Promote oral health improvement	Low	WACHS Early Childhood Dental Program	WACHS related activities, delivered via Dumbleyung Primary School	Support Department of Health, WACHS or the authority responsible for promoting knowledge and education about oral health management in the community through its communication channels.
Administer Public Health Legislation	Low	Town Planning Scheme	Information provided on the Shire's website on business and food safety considerations for small businesses.	Continue to meet its environmental health legislative requirements.

* According to health data / indicators for the community

3. Improve Aboriginal health and wellbeing

Policy priorities	Priority for Dumbleyung*	Aligned SoD or WACHS Plans and Policies	Existing activities within the Shire	The Shire will:
Enhance Partnerships with the Aboriginal Community	High	Shire of Dumbleyung Strategic Community Plan - Dumbleyung Aboriginal Support Plan	Shire has strong partnerships with local Aboriginal Tourism Operators who are key contributors to the local economy.	Continue to support local Aboriginal Tourism Operators including building additional value to existing visitor offerings and broadening the market to increase awareness and visitation.
Promote culturally-secure initiatives and services	Medium	Shire of Dumbleyung Policy 1.20 - Acknowledgement of Noongar People	Welcome to Country initiated at official Shire events, Acknowledgement of Noongar People introduced at all Shire Council Meetings, mediums and public documents.	Continue to promote and acknowledge local Aboriginal (Willman) people at all formal and informal public meetings, functions and events.
Continue to develop and promote Aboriginal controlled services	Low	No current policy or plan	Shire has strong partnerships with local Aboriginal Tourism Operators who are key contributors to the local economy.	Support Aboriginal Community Controlled Health Organisation (ACCHO) to identify and implement opportunities for Aboriginal Controlled health services in the Dumbleyung Shire and surrounding region
Ensure programs and services are equitable and accessible	Low	Disability Access and Inclusion Plan, 2019-2024	No current activities	Continue to ensure that its programs and services remain equitable and accessible for Aboriginal people.
Promote Aboriginal health and wellbeing core business for all stakeholders	Low	Disability Access and Inclusion Plan, 2019-2024	No current activities	Support WACHS to promote and disseminate public information relating to Aboriginal health and wellbeing.

* According to health data / indicators for the community

Strategic health Infrastructure and services

Dumbleyung Memorial Hospital



4. Sustain Dumbleyung’s hospital services and health workforce

Dumbleyung Memorial Hospital is a small hospital that provides critical services to the community. Ongoing investment and more health workers are required to ensure services can be maintained at a high quality.

The WA Department of Health’s health profile for the Wheatbelt Region in 2020-21 highlights that 75% of emergency department attendances by Wheatbelt residents occurred at Wheatbelt hospitals with Southern Wheatbelt residents having:

- the highest proportion (81%) of emergency department attendances at a hospital in their own district.
- the highest proportion (49%) inpatient separations (utilisation of hospital services) at a hospital in their own district.

In 2022/23, there were 142 emergency department presentations at Dumbleyung Memorial Hospital. The majority (126) were ‘less urgent’ to ‘potentially serious or urgent’ but not immediately or imminently life threatening. The remainder (16) were life threatening. The majority (139) of presentations were transferred out by ambulance and 3 highest priority patients by Royal Flying Doctors Service.

In the same period there were 658 occasions of service for adult outpatient care for the community. Of these, the vast majority were for nursing care such as wound management. There were also additional services in child health and childhood immunisation.

What’s needed?

Housing for health workers	3 new households in Dumbleyung to support the direct employment of 3 health workers who live and work locally, rather than “drive in drive out” from Perth.
Ongoing operations	Ongoing State Government commitment to keep open and invest to maintain a modern Dumbleyung Memorial Hospital

This data, coupled with an ageing population, and the high burden of disease in the population highlights that the Dumbleyung community will have ongoing need for hospital services (coupled with General Practitioner services).

A challenge for Dumbleyung will be attracting and retaining the workforce required for the hospital to deliver a high quality and consistent level of care to the community. In 2011, there were 30 Dumbleyung residents employed in Health Care and Social Assistance, including 14 Community and Personal Service Workers. In 2021, 25 residents reported working in this industry, and the number of Community and Personal Service Workers had reduced to 5.

Housing shortages is a critical issue facing many Local Governments who are trying to attract workers. Dumbleyung will need more housing to be able to attract and retain skilled health workers. The lack of quality and affordable housing for workers was also identified as a concern for community members during consultation for the Shire’s Strategic Community Plan.

Impacts

Investment in hospital upgrades and the construction of housing for health workers will:



Improve the quality and consistency of primary and allied health services in the Southern Wheatbelt region..



Reduce the risk of population decline, by ensuring services that community needs are being sustained locally.



Provide employment opportunities through construction (5FTE) and ongoing operation (0.75FTE) phases.



Contribute to a stronger, more vibrant and stable town, where workers live locally and become part of the community.

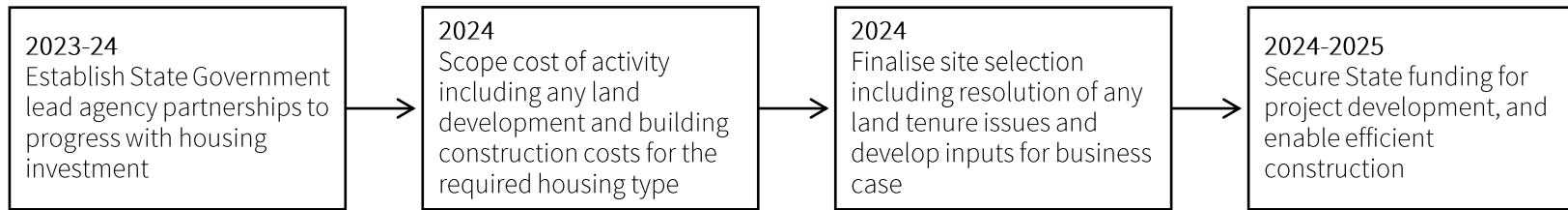
Alignment with State Public Health Plan priorities

State Public Health Plan Priority	Alignment
Empowering and enabling people to live healthy lives	Enhancing access to emergency health care and other services, particular to those living in remote areas.
Providing health protection for the community	Building a stronger economy that can support the retention of the population and attract new residents, helping to sustain and grow existing health services and infrastructure.
Improving Aboriginal health and wellbeing	

4. Sustain Dumbleyung’s hospital services and health workforce – Implementation

Actions & timeframes

The Shire will undertake the following actions to deliver this project



Throughout this process, the Shire will communicate progress and opportunities with residents and businesses, as well as externally to attract workers.

Partners and stakeholders

The Shire will collaborate with the following partners and stakeholders to deliver this project

Wheatbelt Development Commission & State Government Agencies	Dumbleyung Memorial Hospital (DMH)	Project developers including architectural & building construction	WACHS
The Shire will advocate to WDC and other State Government agencies for funding contributions.	The Shire will work with the DMH to understand ongoing infrastructure needs and skills / worker requirements.	The Shire will work with local construction enterprises to deliver the housing project, creating opportunities for local businesses and employment.	To attract and directly employ health workers who work <i>and</i> live in Dumbleyung, strengthening the local community.

Resources

The project will require the following resources

\$2-3 million for capital expenditure on key worker housing	As required capital investment to maintain a modern accessible hospital	Shire resources and advocacy to secure funding and commitments	Shire resources to communicate progress and services to the local and regional community
---	---	--	--



5. Increase capacity for Royal Flying Doctor Services

Dumbleyung’s airport is a critical asset for the community and the economy and requires upgrades to meet all RFDS requirements.

Currently, night-time RFDS call outs are unable to land in Dumbleyung and require patient transfer to another site. In many cases this is Katanning Airport (62kms away - 42-55 minutes drive).

To ensure residents in the district have full access to the service, the Dumbleyung Airport runway will need to be extended to meet RFDS runway requirement of 1,000-1,200m (currently the strip is 899m).

In addition, lighting of the runway, taxiway, windsock and parking apron will be required to enable night operations.

Extending the runway will also enable opportunities for Dumbleyung to service new industries such as mining, providing greater access to key sites as well as the services and amenity in Dumbleyung. The flow on effect of this on local jobs, population growth and retention will also contribute to more sustainable health services.

What’s needed?

Runway extension	Additional 300m to meet RFDS requirements.
Runway lighting	Modern lighting infrastructure and equipment will be critical for night-time landings.
Taxiway and apron marking	Fresh markings and any required surface upgrades to strip, apron and taxiway to ensure they are highly visible, particularly at night
Windsock	Upgrade and maintenance to meet CASA Airport Certification requirements
Surface upgrades	Bitumen sealing program - upgrade and maintenance of whole airstrip
Boundary fencing extension	Additional fencing required after runway extension



Impacts

The extension of the runway will:



Ensure 24/7 access for Dumbleyung residents (and district residents) to undertake aeromedical patients retrieval and emergency health care and transportation.



Provide additional capacity for Dumbleyung to service regional industries such as tourism and mining, creating opportunities for more regional employment.



Contribute to health service continuity for the regional population (through population retention and attraction, allowing local services to be more sustainable).

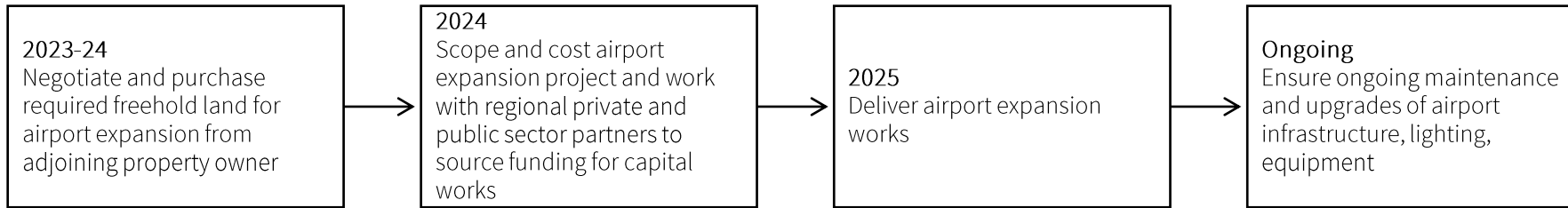
Alignment with State Public Health Plan priorities

State Public Health Plan Priority	Alignment
Empowering and enabling people to live healthy lives	Enhancing access to emergency health care and other services, particular to those living in remote areas.
Providing health protection for the community	Building a stronger economy that can support the retention of the population and attract new residents, helping to sustain and grow existing health services and infrastructure.
Improving Aboriginal health and wellbeing	

5. Increase capacity for Royal Flying Doctor Services - Implementation

Actions & timeframes

The Shire will undertake the following actions to deliver this project



Throughout this process, the Shire will communicate progress with the local and regional community to ensure residents understand how to access RFDS services in an emergency.

Partners and stakeholders

The Shire will collaborate with the following partners and stakeholders to deliver this project

Royal Flying Doctor Service WA	Strategic industry partners	WACHS	Aviation expertise & local industry	Emergency services
Ensure airstrip extension plans will meet RFDS requirements.	Partner with industry (i.e., mining industry) to identify opportunities for co-investment in joint infrastructure.	Explore opportunities for airstrip to contribute to health services, benefits and programs for the wider regional population.	Obtain detailed advice and costings for extension and upgrade requirements + delivery of services to carry out works.	WA Emergency Services to ensure upgrades meet requirements for emergency response.

Resources

The project will require the following resources

\$3m for capital upgrades to the airstrip	Shire leadership and advocacy to identify partnerships and funding	Ongoing operational funding to ensure airstrip has access to working lights and windsocks	Shire resources to communicate upgrades and services with residents
---	--	---	---



Images: Royal Flying Doctor Service WA Website

6. Improve access to GPs and specialists through Telehealth Hub

As Dumbleyung’s population ages, and more residents are attracted to the town to service local industry growth, there will need to be better access to GPs and specialists. Currently, Dumbleyung is serviced by a visiting GP once a month and is otherwise reliant on telehealth or residents travelling to other areas.

Between 2013-14 and 2018-19, the percentage of the population who visited a GP in the last year in Wheatbelt South increased from 80% - 87%. In 2020, Wheatbelt South’s ratio of GPs to population was 0.8FTE per 1,000 people, which is lower than the WA State Average of 1.1 FTE per 1,000 people. In addition, the ratio of vocationally registered GPs was also very low in Wheatbelt South, compared to State.

The Australian Institute of Health and Wellbeing conducted an Access to Relative Need analysis in 2014 to understand to what extent different locations in Australia had access to primary care. The study highlighted that health outcomes improve more dramatically with improved access to GPs in areas with relatively high predicted need for primary health care than in areas with low predicted need.

WACHS engagement with regional stakeholders has also highlighted that workforce issues such as high staff turnover and staff shortages has affected the quality of primary care provided in the Wheatbelt Region.

What’s needed?	
Enhanced access to GPs	Expanded access to GPs, specialists and other health services via increased provision of telehealth services from Dumbleyung Memorial Hospital.
Enhanced access to specialists	
Improved community knowledge of how to use telehealth	The community should be supported to understand when and how it is appropriate to use the telehealth system.

Access to GPs and specialists can be improved by embracing innovation and technology, including the benefits of the telehealth system, which has been dramatically improved in recent years and is expected to continue increasing in use.

Dumbleyung has recently benefitted from new enterprise grade wireless broadband connectivity across the Shire which help the community take advantage of the telehealth system to access primary and specialist health care.

The Shire will partner with WACHS to harness high speed internet and the existing infrastructure provided by Dumbleyung Memorial Hospital to deliver a pilot expansion of telehealth services, giving residents more access to GP appointments, as well as other specialists as required.

Impacts

Enhancing access to GPs and specialists through expanded telehealth will:



Improve community access to primary health, mental health and specialists, helping to prevent and manage critical and long-term illness in the community.



Allow residents to access health care while also minimising the need to travel to access services, which can be at a high cost (time and money) or be completely prohibitive.



Empower residents to be more proactive about their health.



Help the town to retain and attract residents through ensuring access to high quality health care.

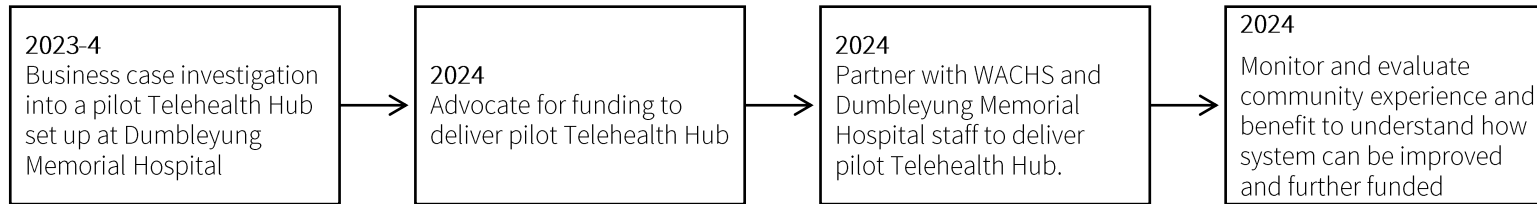
Alignment with State Public Health Plan priorities

State Public Health Plan Priority	Alignment
Empowering and enabling people to live healthy lives	Enhancing access to primary and specialist health care and other services, particular to those living in remote areas.
Providing health protection for the community	Empowering the community to be more proactive about their health and wellbeing through opportunities for early intervention.
Improving Aboriginal health and wellbeing	Building a stronger economy that can support the retention of the population and attract new residents, helping to sustain and grow existing health services and infrastructure.

6. Improve access to GPs and specialists through Telehealth Hub – Implementation

Actions & timeframes

The Shire will undertake the following actions to deliver this project



Throughout this process, the Shire will communicate with the community ensure they understand when and how to use telehealth to access the health care and advice they need.

Partners and stakeholders

The Shire will collaborate with the following partners and stakeholders to deliver this project

WACHS – Telehealth Coordinator	WA Primary Health Alliance	Dumbleyung Memorial Hospital team
Partner in enhancing telehealth services from Dumbleyung Memorial Hospital . Delivery of communication to the community about how to access telehealth, and what services are on offer.	Potential funding partner to expand GP services through telehealth.	Collaborative partner in delivering expanded telehealth services and support from the hospital.

Resources

The project will require the following resources

Increased use of space at DMH to deliver expanded telehealth services	Funding to deliver business case investigation	Contract with GP services to deliver expanded telehealth services	WACHS resources to assist in delivering pilot hub
---	--	---	---



Telehealth appointment room – Dumbleyung Memorial Hospital

7. Complete stage 2 of Dumbleyung’s Aged Care Residential Hostel Project

Dumbleyung’s aged care independent living units are at capacity. Demand for local residential care will continue to grow as the population ages and more spaces are required so residents can age in community.

The WA Country Health Needs Assessment identified that there are minimal community services to assist people to age in place in their own homes or in residential services.

A shortage of services means that people who are eligible for aged care packages may not be able to access the required services. This means many people are forced to leave their community, and their social and support networks, and go to larger centres to access care.

This is a particular issue for local Aboriginal people, who have strong cultural and family connections to Country, and for whom it is critical to be able to remain on Country as they need more care in their advanced years.

Dumbleyung’s current residential aged care services are situated opposite Dumbleyung Memorial Hospital and offers a total of 5 beds. An increase of 5 beds is required to ensure the community is serviced appropriately over the next 10 years.

*Construction job estimates are high level only, and derived from existing studies (Acil Allen, 2022) and benchmark projects.

What’s needed?

Ability to accommodate up to 10* residential aged care places in Dumbleyung by 2033.

Stage 2 of Dumbleyung’s residential aged care development needs to be delivered to enable 5 more residents’ access to in-community residential aged care by 2031. Hostel style aged care provides an alternative to in-come and high needs care, helping transition people through this period, while allowing them to stay in their community.

Additional beds will ensure access to 24/7 supervision, meals supplied, private rooms, communal facilities and qualified staff.

* Source: Shire of Dumbleyung



Impacts

The delivery of Stage 2 of Dumbleyung’s residential aged care services will:



Allow more residents to access hostel style aged care in their community and on their Country.



Improve access for local residents to essential primary health services, by being closer to Dumbleyung Memorial Hospital.



Ensure families and support networks can be maintained as residents aged, retaining social cohesion and building strong communities of care.



Deliver approximately 2-3 FTE construction jobs*, and additional operational jobs to service the beds.

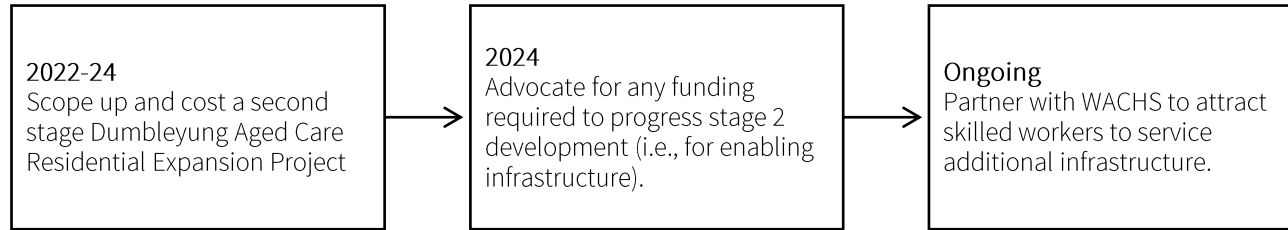
Alignment with State Public Health Plan priorities

State Public Health Plan Priority	Alignment
Empowering and enabling people to live healthy lives	Empowering ageing residents to access health care, support and services in their own community.
Providing health protection for the community	Supporting the development of social infrastructure that helps to keep families together.
Improving Aboriginal health and wellbeing	Facilitating better access to ageing on Country for local Aboriginal people.

7. Complete stage 2 of Dumbleyung's Aged Care Residential Hostel Project

Actions & timeframes

The Shire will undertake the following actions to deliver this project



Partners and stakeholders

The Shire will collaborate with the following partners and stakeholders to deliver this project

WACHS		Local enterprise
Shire will work with WACHS to ensure that stage two residential expansion design meets residential aged care needs.	The Shire will work with WACHS to seek State/Federal Government capital grant funding to enable the residential expansion project to proceed.	The Shire will facilitate, where possible, the expansion to utilise local construction enterprises to ensure the economic benefits go to the local community.

Resources

The project will require the following resources

Architectural consulting support and QS estimates for preferred project design.	Shire resources to advocate to secure capital grant funding towards the project.	WACHS support to assist Shire to secure necessary capital expenditure grant funds to deliver project.
---	--	---



Throughout this process, the Shire will communicate progress and future services with the community, ensuring they understand how their families can access and benefit from the expansion of residential aged care services.



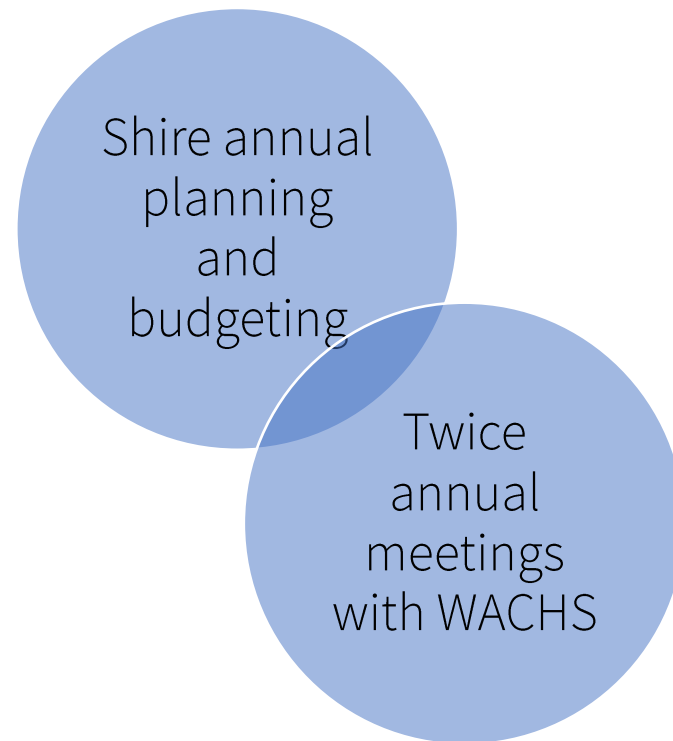
Statue, Dumbleyung

Monitoring our progress and reviewing our priorities

The delivery of key projects and initiatives included in this Public Health Plan is highly dependent on external resources and support of the State and Federal Governments. The Shire of Dumbleyung is comfortable to lead effort in plan implementation with supported resourcing from the other key levels of government.

As part of the Shire's annual planning and budgeting process, the Public Health Plan's initiatives and projects will be reviewed to track progress and identify any new priorities, challenges or opportunities. This process will also assist with identifying resources (financial, human and other) required to deliver initiatives each year.

In addition to the above, the Shire will conduct twice-yearly meetings with WACHS to discuss progress against initiatives, seek advice and support on implementation and resourcing, and identify solutions to any challenges or constraints that have arisen. These meetings will provide an opportunity for the Shire to proactively report on the Local Government performance under the Act.





If you have any questions regarding the Shire of Dumbleyung's Public Health Plan, please contact our CEO: ceo@dumbleyung.wa.gov.au

Dumbleyung local artwork

